

The Bio Test is so named because it uses a particular substance, called Meta substance, that is able to amplify the background signal of the biological sample (hair, fur ,or salivary buffer) to be analyzed.

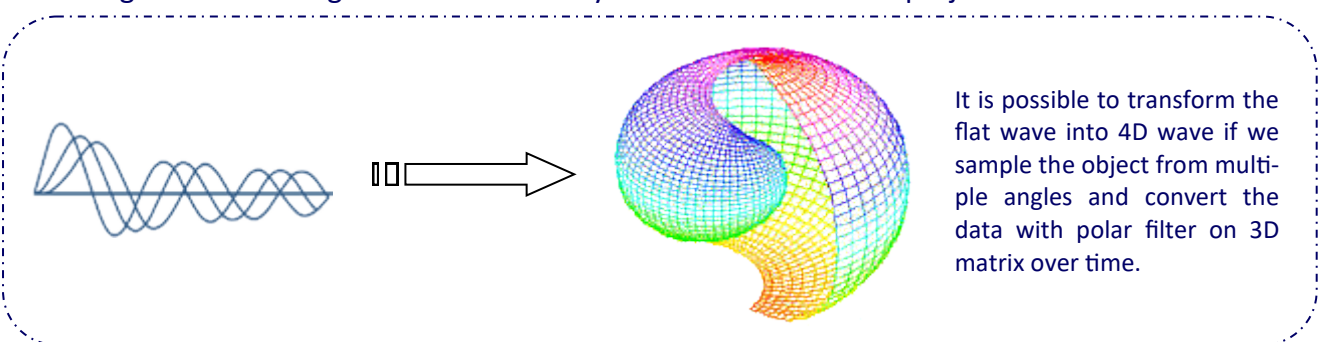


This is a compound highly saline, submitted to a thermodynamic process; the processing of the starting substance and the different steps made at different temperatures, in the intermediate stages, give the Meta substance the capacity to amplify the background signal of a biological tissue (hair or salivary buffer) immersed in the test tube. It behaves as a “magnifying glass” able to amplify the weak background signal of the tissue (hair or salivary buffer) by an electronic contact with it. Without Meta substance the subject’s tissue to be analyzed would practically result invisible to the machines and the error of the analysis would be very high.

To overcome this drawback, several measures, of chemical, technical and mathematical- software nature have been adopted.

The first difficulty to overcome was to make the signal as reliable as possible; the current systems of frequency analyses, such as the devices of bio-resonance equipment according to Vega or Voll bioenergetics method, besides being simple detectors of mill amperes, use a signal of a flat nature, that is represented only on two Cartesian axes: x, y . Relying on the intuitions of Prof. Palmieri on the unigravitational physic and to some interesting works on gravitational waves ,conducted by physicists of University of Padua, we were able to develop a system that sends and receives 4-dimensional waves, that are represented on four axes: x, y, z, t. The x, y and z axes are the characteristic spatial axes, while the fourth axe t (that is no representable in a graphic way, but only in a mathematical way) is the time axis. In this way we reached a greater likelihood with the tissue we analyze.

In nature, indeed, it is absolutely not real to find biologic signals that are in only two dimensions , x-y. The whole universe is four- dimensional, it is a space that changes over time. Any object in the universe is always a body with a mass in a three dimensional volumetric space that ages over time (t axis). Only in theory and for simplicity, physics books report signals as flattened, but in nature to analyze a biological tissue with a flattened signal, it is as I wanted to caress the shadows of a puppy mistaking it for a real dog. The shadow is only a of two–dimensional projection of a real animal that



actually has many more dimensions.

Once this difficulty has been solved, the problem of signal amplification remained to be solved. The biologic waves, although 4-dimensional, still remained very low and little perceptible; sending the frequency of a food, such as the ‘apple’, to a biological tissue, the response signal was so low that it was easy to fall into an error of verification of the intolerance.

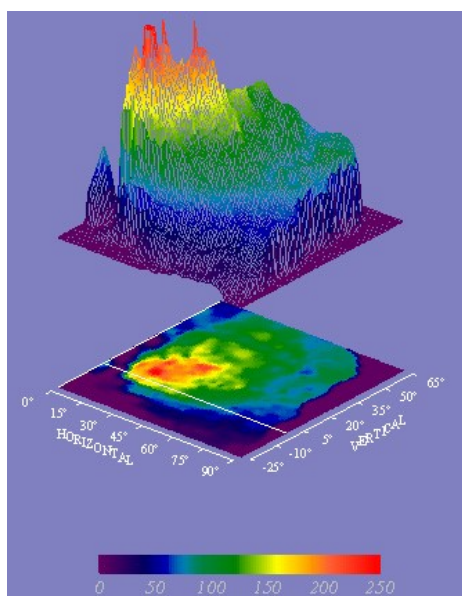
Enterprise system in compliance



Laboratory registered at the national research registry office of University and Health Ministry.
Patented technology system.
ISO9001 and EA38 Health compliant service.

The Meta substance was produced about 12 years ago. For a long time it remained unused until a conference in Alessandria (Italy). From there was formed the Daphne laboratory, that in only a few years developed a patented method to use the enhanced substance for the analysis of 4D frequencies. Without the Meta substance, the electronic circuits alone would not have been able to amplify the 4D signal of the biological tissue, which would have remained so weak as to affect the accuracy of each test.

The current equipment still uses flat signals in electronic format, file test or magnetic systems. The Daphne Lab has developed a new Generation of BioMetaTest: effective, functional and with a technology highly superior to the existing one.



Switching from a spectrum of flat waves to one of 4D waves and merging this technology with the Meta substance was a research that allowed us to reach a new level of knowledge of biology. During those years, 1995-2001, we founded a new science. A science that conceives the human being from its more chemical and embryonic levels to the higher and spiritual ones without ever separating them from one another. In a sense, it was like merging physics with metaphysics.

We had to use a kind of 'magnifying glass'. This lens was offered to us by some operational amplifiers inserted in squid-like circuits, used by University of Padua to pick up gravitational waves coming from other galaxies. But this was not enough to solve the problem. The question was of a chemical nature, not just electronic.

Only the Meta substance, an all-Italian patent, proved to be very useful for raising the level of the response signal without deforming it, nor altering it in any way.

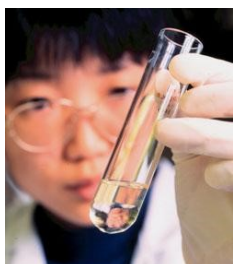
If the hair, or another biological tissue, is inserted into the Meta substance, its signal is amplified without points of deformation by the machine system; a specific interface captures it and sends it to the computer that processes this 4-dimensional signal, generating a series of value much more reliable than usual systems. The absolute novelty of the Daphne BioMeta-Tests system, lies in the meta substance and in the 4-dimensional signal analysis system.

To stabilize the data through a calculation procedure, we relied on a powerful management software, that analyzes and filters the data at several levels of compatibility with the data supplied by the customer in the appropriate form 62 of analysis request.

The software is able to extrapolate several variables, because it compares several analytical factors of laboratory. Each measurement is repeated five times and gets the final result from the geometric media of these values. If the deviation between a measure and another is too wide, the software orders to process a new measurement on the element which results 'doubtful'. Some values are then crossed to obtain a better calibration: for example, if we are intolerant to the alcohol group, all the alcohols are encoded in series, then the value of the liver is measured, combined with the value of the fructose that is hydrolyzed at hepatic level, and we investigate if bile has a good functional response, etc...

Why all these cross-checks? A self-respected Holistic Test must consider the patient and the analytical report from many points of view, compare them, weighs them and overlap them. If there are a lot of organs and enzymes linked to the digestive process of alcohol that don't work well, then the rate of intolerance to alcohol is slightly increased. If we are talking about a 20-year old guy, with all organs and enzymatic metabolites in perfect order, the rate of intolerance is lowered. This compensation algorithm is very important, because, if we measure the





percentage of the raw intolerance, it would result distorted at a first investigation, especially if the biological system is affected by disturbing information (medicines, toxins, foods, stress, lifestyles, etc ...). These background disturbances influence the analysis and would point to some so-called 'masked intolerances'. To overcome this problem, just the Meta substance and the fourth-dimensional wave method were not enough, we have to recur to a careful software programming comparison, coding and filtering all the data we can find from a small portion of biological tissue, the hair or saliva.

This software is controlled by a powerful mathematical model with fuzzy logic. For legal and security reasons all the models and equations are still kept confidential because it is not possible to patent mathematical formulas, which would then be easily reproduced by other companies if left in public domain.

DAPHNE LAB staff

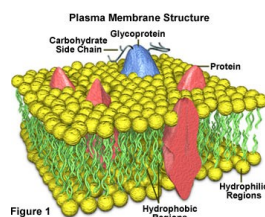


Figure 1
From these investigations we discovered that the pathological frequency of intolerances and disturbance fields was stored in the cell membrane of each tissue.

As each cell membrane behaves like a chemical double-layer spherical condenser, the more the cells were involved in the disturbance frequency process the more the intolerance was widespread and acute at the biological level. From here a series of equations on parallel and serial capacitors was used to determine the density of membrane charges and therefore the percentage depth of the disturbance frequency. The Daphne BioMeta-Test allows to capture a cell density with the same disturbance frequency stored in the membrane.

This archived frequency is in 4D format and can only be detected by a chemical amplifier such as the Meta substance.